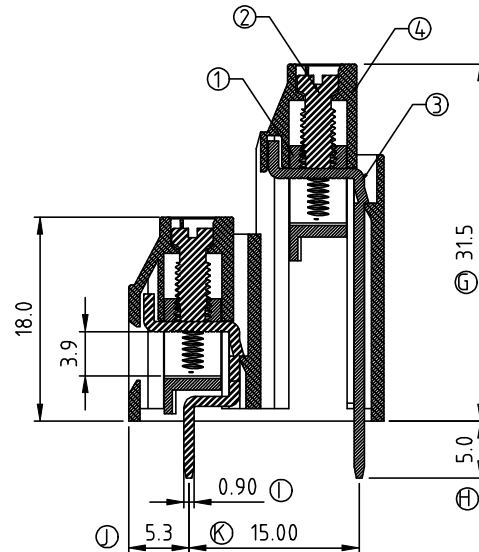
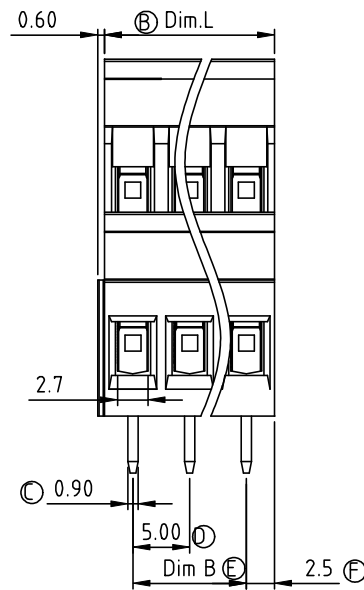
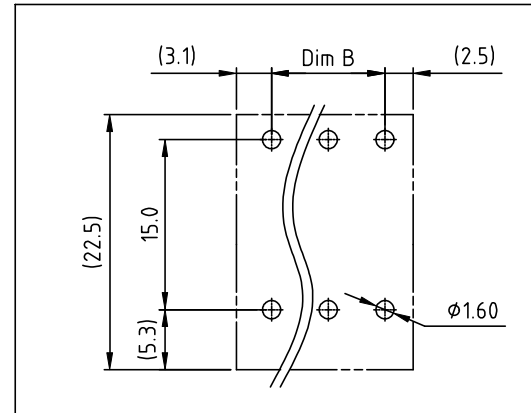
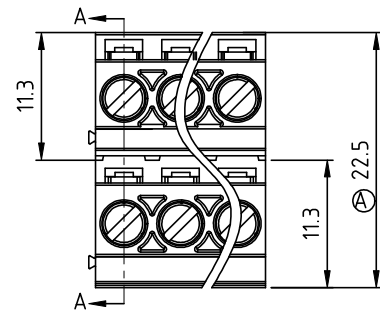



SIGN	DATE	DESCRIPTION	APPROVER
△	04/19'10	Part NO.is changed	Aaron
THIS IS CAD DRAWING, DO NOT REVISE MANUALLY!!!			



### Material

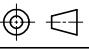
- Item① Clamp : Brass , Ni plated
- Item② Terminal screw: Steel Zinc plating "- " slot type
- Item③ Wire guard solder pin : Brass ,Tin plated
- Item④ Terminal housing : Thermoplastic (UL94V-0)

### Electrical

- Voltage rating: 300VAC
- Current rating: 20A
- Wire range:
- Solid wire(AWG): 12-22
- Stranded wire(AWG): 12-22
- Torque(Lb-In): 4.3
- Screw: M3
- Wire strip length: 7-8mm
- Withstanding Voltage: 1.6KV
- Operating temperature: -40°C to +115°C
- Soldering temperature: 250°C±10°C/5 Sec
- Safety Approval : 

△ EB xx 01 x 3 xxxx G			RoHS Pb<40,000ppm
No. of poles end stackable design	0	Black (RAL9005)	0000:"@ "Logo (Standard )
	2	Red (RAL3001/D)	000A:"ANYTEK"Logo
04 2×2 CONTACTS	3	Orange(RAL2011/P)	Any special item by customer request, please contact sales department.
06 2×3 CONTACTS	4	Yellow(RAL1018/A)	
...	5	Green(RAL6018/T)	
48 2×24 CONTACTS	6	Blue (RAL5015/A)	
	8	Grey(RAL7035/D)	

Poles	2×2	2×3	2×4	2×5	2×6	2×7	2×8	2×9	2×10	2×11	2×12	2×13
Dim L	10.00	15.00	20.00	25.00	30.00	35.00	40.00	45.00	50.00	55.00	60.00	65.00
Dim B	5.00	10.00	15.00	20.00	25.00	30.00	35.00	40.00	45.00	50.00	55.00	60.00
TOL	±0.20						±0.30					
Poles	2×14	2×15	2×16	2×17	2×18	2×19	2×20	2×21	2×22	2×23	2×24	
Dim L	70.00	75.00	80.00	85.00	90.00	95.00	100.0	105.0	110.0	115.0	120.0	
Dim B	65.00	70.00	75.00	80.00	85.00	90.00	95.00	100.0	105.0	110.0	115.0	
TOL	±0.30						±0.40					

ANYTEK				CUSTOMER COPY			
				ALL RIGHTS RESERVED. REPRODUCTION OR ISSUE TO THIRD PARTIES IN ANY FORM WHATEVER IS NOT PERMITTED WITHOUT WRITTEN AUTHORITY FROM THE PROPRIETOR. PROPERTY OF ANYTEK TECHNOLOGY CO., LTD			
TITLE	EB 5.0mm Series Solder pin in line ( W/o cover )						
PART NO.	EBxx01x3xxxxG △			DWG NO.	8EB0401		
APPROVED	CHECKED	DESIGNED	DRAWN	CUST NO.			Tolerance
		Aaron 2010.04.19	Kind 2008.12.04			UNIT: mm	X. ±0.50
						SCALE: NONE	X.X ±0.30
							X.XX ±0.10
				SHEET: 01/01		REV.: C	X° ±1°
5				6			7