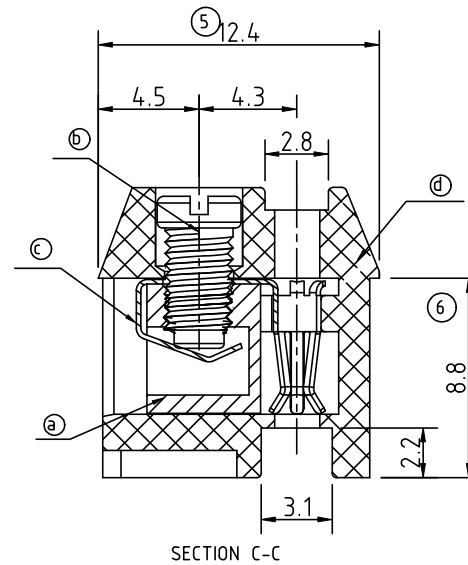
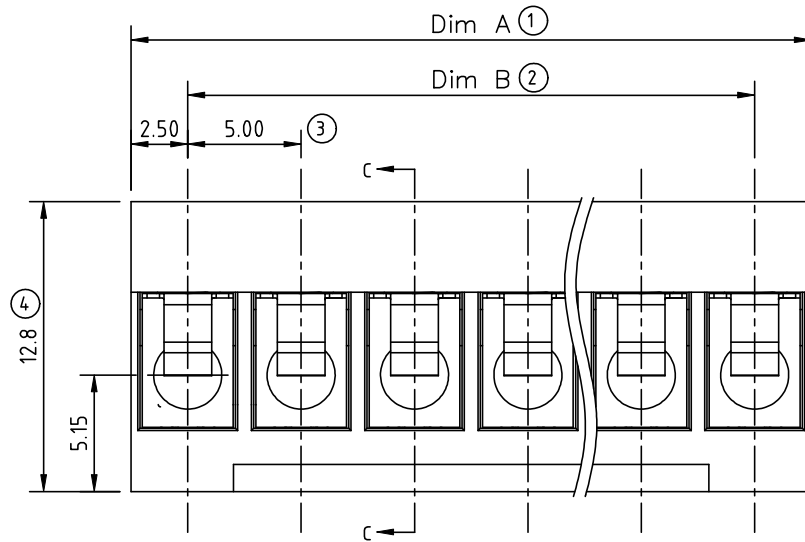
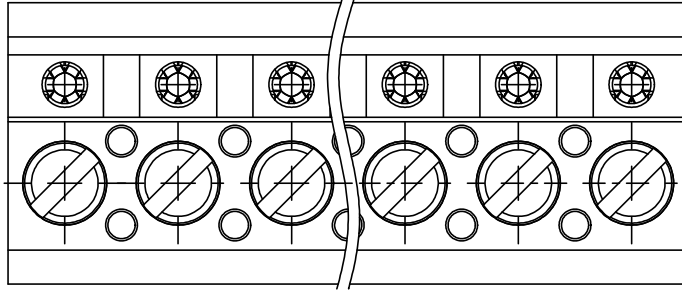


| SIGN | DATE | DESCRIPTION | APPROVER |
|--|------|-------------|----------|
| △ | | | |
| THIS IS CAD DRAWING, DO NOT REVISE MANUALLY!!! | | | |



SECTION C-C

N = Number of poles
 Dim A=Nx5.0
 Dim B=(N-1)x5.0

| | Dim A | Dim B |
|--------|-------|-------|
| 2-6p | ±0.15 | ±0.15 |
| 7-12p | ±0.20 | ±0.20 |
| 13-18p | ±0.30 | ±0.30 |
| 19-24p | ±0.40 | ±0.40 |

Material

- Item a Clamp: Zinc Alloy Ni plated
- Item b Terminal screw: Steel Zinc plating "-" slot type
- Item c Female contact: PhBz,tin plated
- Item d Terminal housing: Thermoplastic (UL94V-0)

Electrical

- Voltage rating: 300V
- Current rating: 10A
- Wire range:
- Solid wire(AWG): 12-26
- Stranded wire(AWG): 12-26
- Torque: 3.9Lb-In
- Screw: M3.0
- Wire strip length: 5-6mm
- Withstanding Voltage: 1.6KV
- Operating temperature:-40°C to+115°C


TX xx 03x0 xxxx G

| | | | | |
|-----|-------------|---|--------------------|--|
| 02 | 2 CONTACTS | 0 | Black | RoHS Pb<40,000ppm |
| 03 | 3 CONTACTS | 5 | Green(RAL 6018/T) | |
| ... | ... | 6 | Blue | |
| 24 | 24 CONTACTS | 8 | Grey(RAL 7035/D) | |
| | | C | Green (RAL 6018/U) | |
| | | | | 0000 Standard @ Logo |
| | | | | 000A Standard ANY Logo |
| | | | | Any special item by customer request, please contact sales department. |

ANYTEK

CUSTOMER COPY

ALL RIGHTS RESERVED. REPRODUCTION OR ISSUE TO THIRD PARTIES IN ANY FORM WHATEVER IS NOT PERMITTED WITHOUT WRITTEN AUTHORITY FROM THE PROPRIETOR. PROPERTY OF ANYTEK TECHNOLOGY CO., LTD

| | | | | | | | | |
|----------|---------------------------------|---------------------|---------------------|---|--------------|--|------|-----------|
| TITLE | TX-5.0mm Series "- " Zinc Alloy | | | | | | | |
| PART NO. | TXxx03x0xxxxG | | | DWG NO. | 8TX0101 | | | |
| APPROVED | CHECKED | DESIGNED | DRAWN | CUST NO. | | | | Tolerance |
| | | Jacke 2010.03.29 | Jacke 2009.12.25 |  | UNIT: mm | | X. | ±0.50 |
| | | | | | SCALE: NONE | | X.X | ±0.30 |
| | | | | | | | X.XX | ±0.10 |
| | | | | | SHEET: 01/01 | | X° | ±1° |